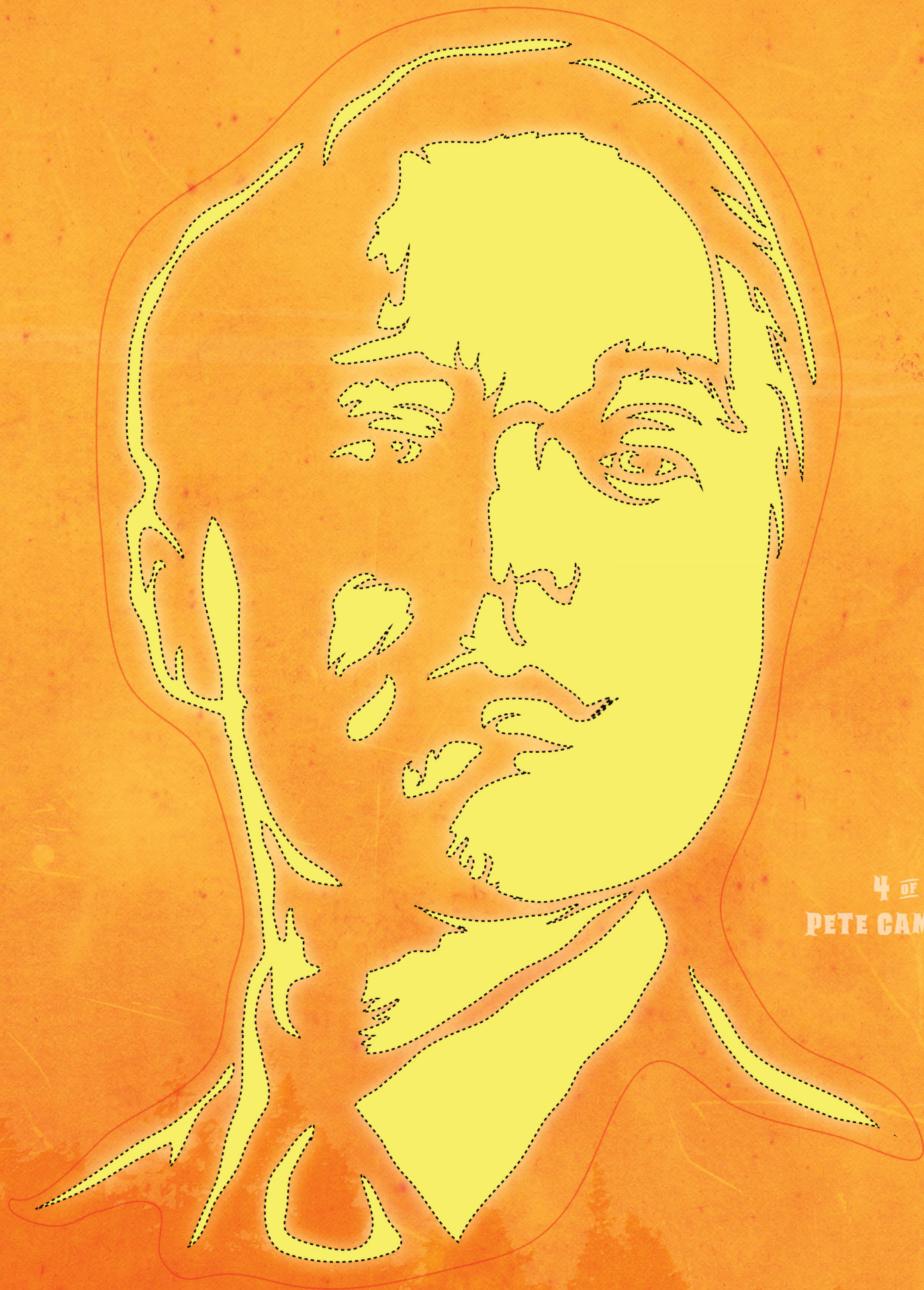


VULTURE



4 OF 4
PETE CAMPBELL

PUMPKIN CARVING

STENCILS OF TV'S MOST GHOULISH

1. CUT OUT A LID OF THE PUMPKIN THAT WOULD FIT YOUR HAND AND A SPOON.
2. REMOVE INNARDS & SCRAPE SURFACE BEHIND WHERE YOUR STENCIL WILL BE UNTIL THE PUMPKIN WALL IS ABOUT 1IN. THICK.
3. CUT AROUND THE RED LINE TO REMOVE THE STENCIL. TAPE IT TO THE PUMPKIN.
4. TRANSFER THE STENCIL ONTO THE PUMPKIN BY POKING ALONG THE DOTTED LINE WITH A THUMBTACK OR NEEDLE.
5. REMOVE THE PATTERN.
6. SAW GENTLY AROUND THE DOTTED LINE PUSHING THE FREED PIECES INTO THE PUMPKIN.
7. PLACE A CANDLE INSIDE AND BRING YOUR PUMPKIN TO LIFE!